

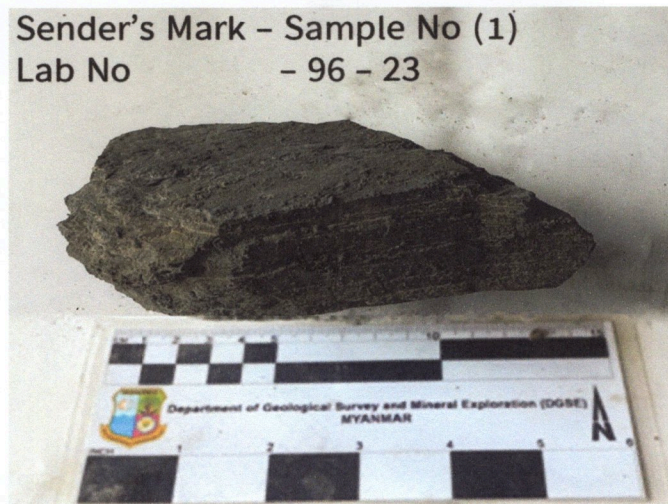
DEPARTMENT OF GEOLOGICAL SURVEY AND MINERAL EXPLORATION
(PETROLOGY AND MINERALOGY SECTION)

Letter No. - 19 /Thala (2)2023

Date - 5.6.2023

PETROGRAPHIC REPORT

Sender - ဦးအောင်ကျော်မိုး
Locality - ရှမ်းပြည်နယ်(အရှေ့ပိုင်း)၊ တာချီလိတ်လေဆိပ်အနီး
2991189 E, 1178771 N
Sender's Mark - Sample No. (1)
Reference - 96 - 23
Rock Name - Slate
Sample escription - Rock Sample



Hand Specimen Description

This is a very fine-grained, dark grey coloured rock with foliated texture.

Petrographic Description

The sample is mainly composed of dark brownish substances intergrown with finely divided sericite flakes, chlorite and silt-size quartz. Well foliated texture is defined by parallel orientation of the finely divided mica flakes, dark brownish micaceous substances and quartz grains. In some places the quartz observed as very fine-grained granular mosaic up to 0.05 mm in size. The reddish brown hydrous of iron oxide locally observed as tiny veinlets and dusty specks aggregates which are intergrown with the dark brown substances. According to X.R.D analysis it consists of quartz, chlorite and muscovite.

Studied by

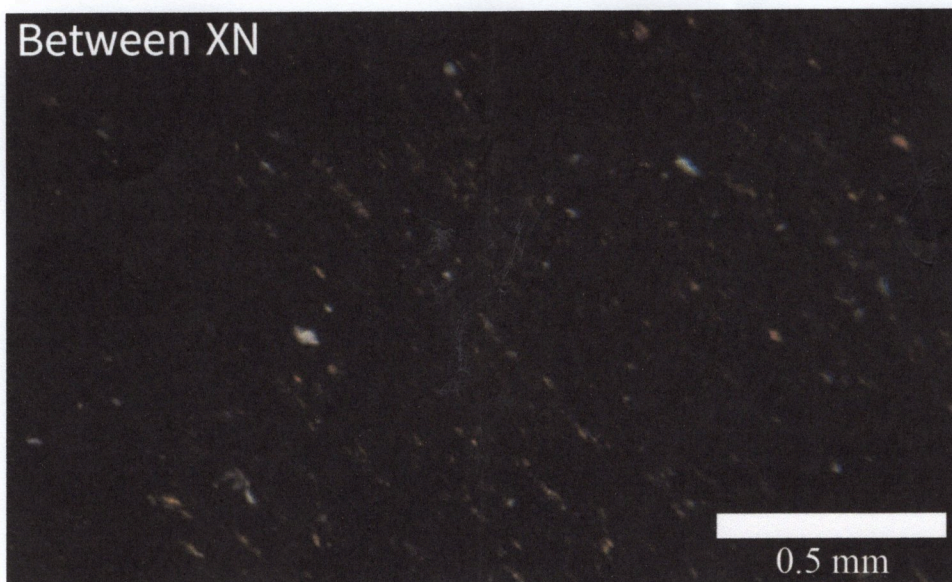
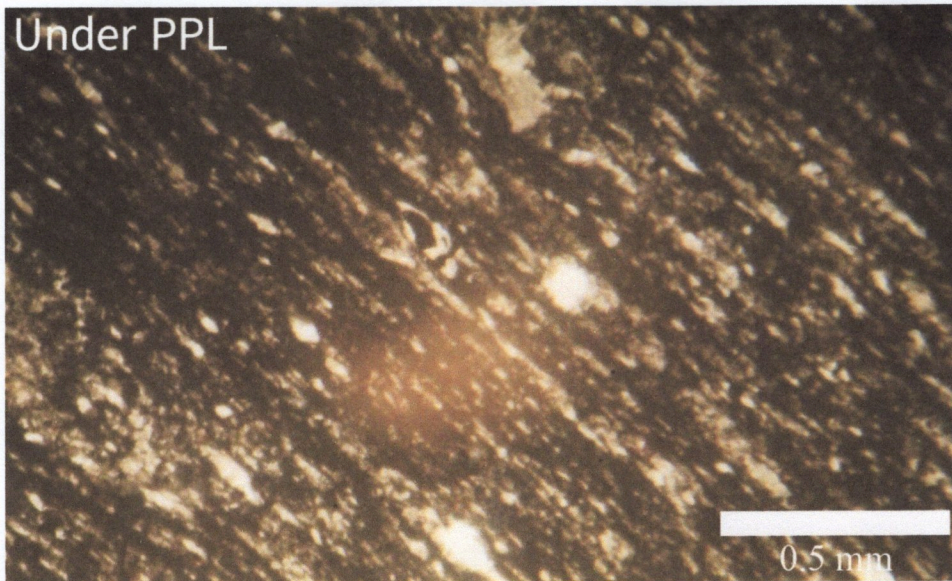


(Hnin Wai Wai)

Checked by



(Khin Than Htoo)



Sender's Mark - Sample No (1) (Lab No. 96 - 23)

Photomicrograph shows parallel orientation of dark brownish substances stringers, minute sericite flakes, chlorite and silt-sized quartz in slate.